

How to install Follow Liker?

To install Follow liker you first need to choose the type of license for your social media account.

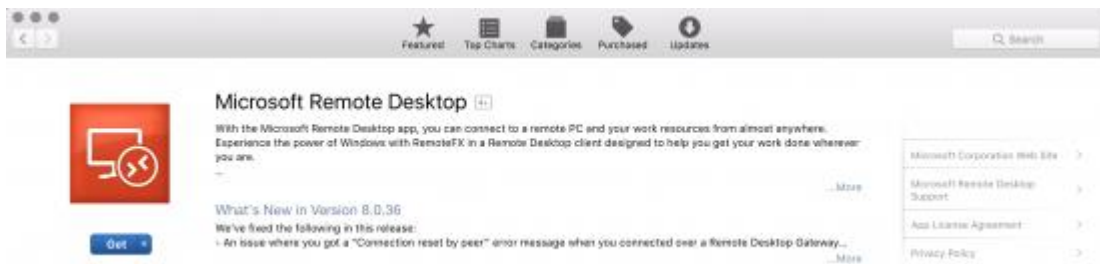
1. Choose your [Follow liker License](#) and after you order it, you'll receive an email with your license details (username and password) and a link to download the software. Keep it for later.
2. Second, you'll need a Virtual private server Cloud (VPS Cloud) which you can get for a fair price here. Notice you can only install one license per system that means you can only have Follow liker in one computer at a time. We recommend the OVH "VPS Cloud 1" for Windows which is fair enough for growing several accounts at a time for \$13.99 USD.

The screenshot displays the OVH.com website's VPS Cloud section. At the top, there's a navigation bar with 'STARTUP PROGRAM', 'DEDICATED', 'CLOUD', 'WEB', and 'ABOUT' links. Below this, a yellow banner highlights features: 'Native high availability', 'NVMe drives', and 'Windows option'. The main content area shows three VPS Cloud plans:

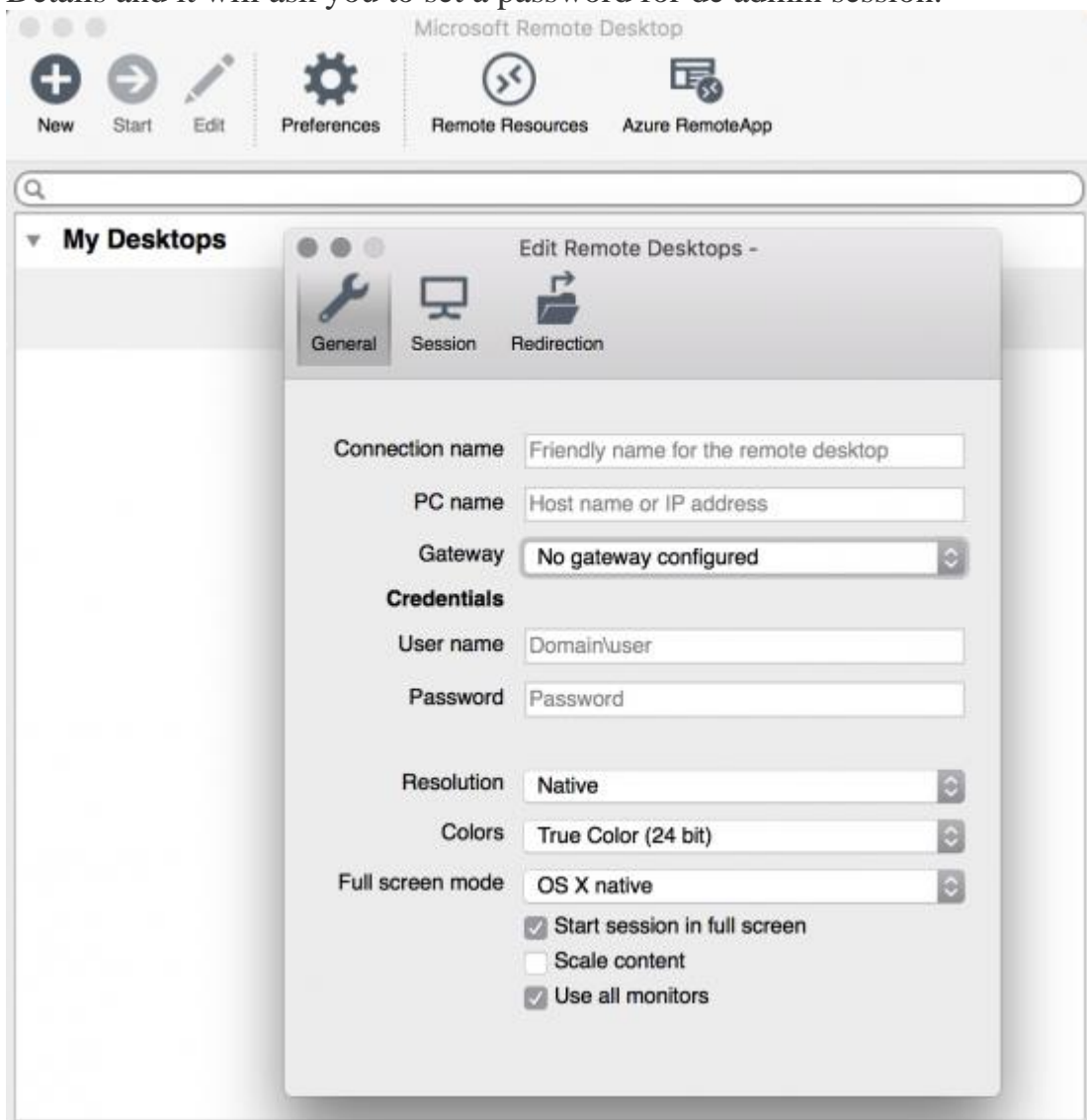
VPS Cloud 1	VPS Cloud 2	VPS Cloud 3
OpenStack KVM 99.99% SLA 1 vCore 3.1 GHz 2 GB RAM 25 GB High Availability (Ceph)	OpenStack KVM 99.99% SLA 2 vCores 3.1 GHz 4 GB RAM 50 GB High Availability (Ceph)	OpenStack KVM 99.99% SLA 4 vCores 3.1 GHz 8 GB RAM 100 GB High Availability (Ceph)
\$13.99/month	\$26.99/month	\$53.49/month
Order	Order	Order

Some minutes after you order it, you'll be emailed the access details:- IP Adress of your VPS

- VPS Name
 - Username
 - Password
3. As we installed it on a Mac OS X we used Microsoft Remote Desktop, which you can find it directly on the App Store and install it from there.

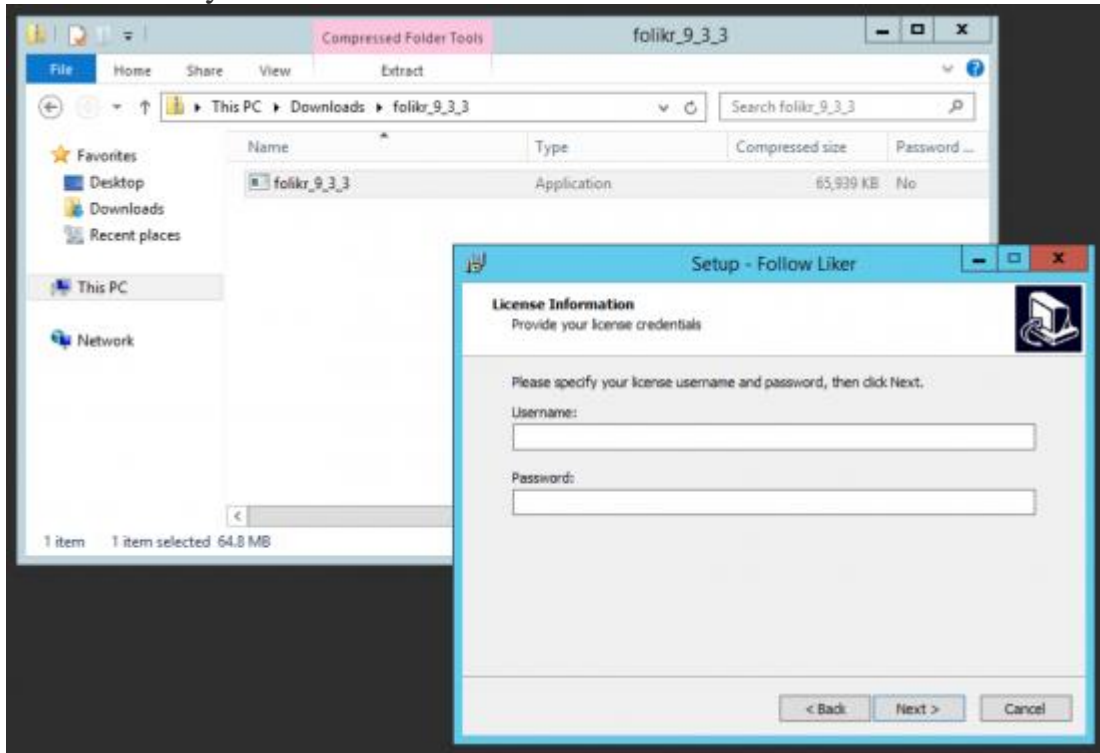


Install it, open it and then click on “New“. It will ask your VPS Access Details and it will ask you to set a password for the admin session.



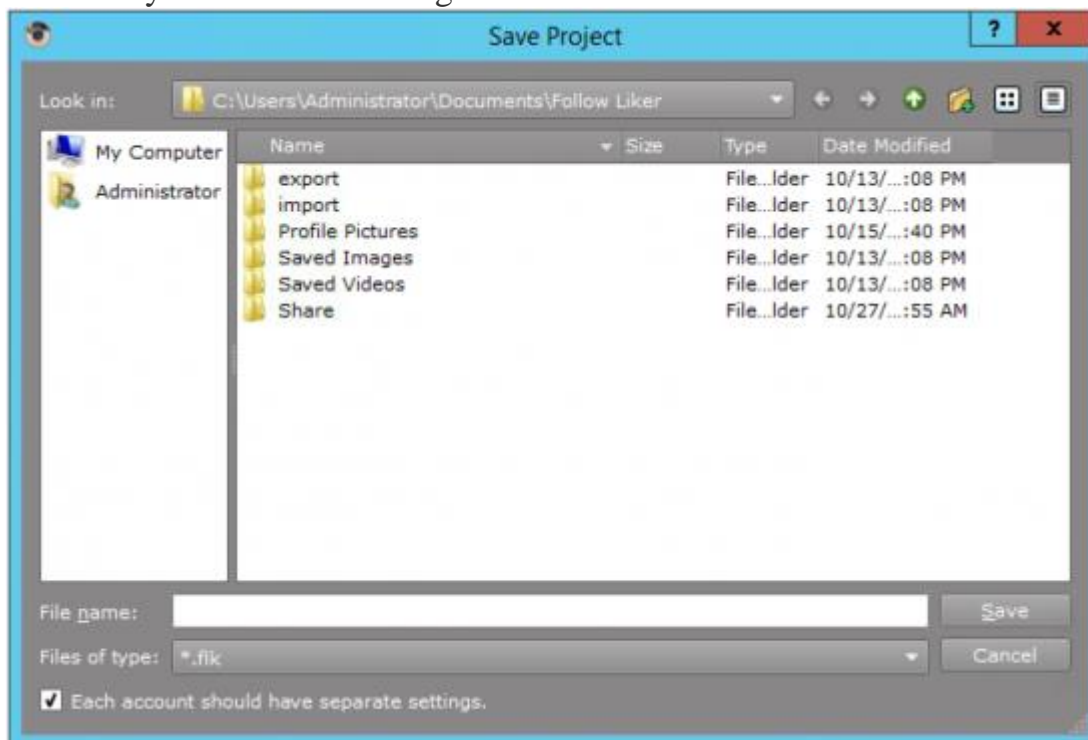
4. Once inside your VPS it's time to install Followliker. Open your email and download the Followliker software on your VPS. Run the Software and

install it with your license details.



5. Once it is installed, open it and the first thing you need to do is create a new project. Select the “*File*” menu and click on “*New Project*“. Name it and before saving it, notice that if you want all the accounts in the new project to use different settings and values, check the “*Each account should have separate settings.*” box at the bottom. We definitely recommend to do this

overall if your accounts belong to different niches.



You are ready to add your first account to the program. If you want to grow several accounts this requires numerous proxies to support the functions of multiple accounts in order to prevent it from getting blocked or banned. We strongly recommend to use dedicated proxies to keep your accounts safe. It is safe to use one proxy per account and you must renew your proxies on Followliker when expired.

Set Up Follow Liker Instagram Edition

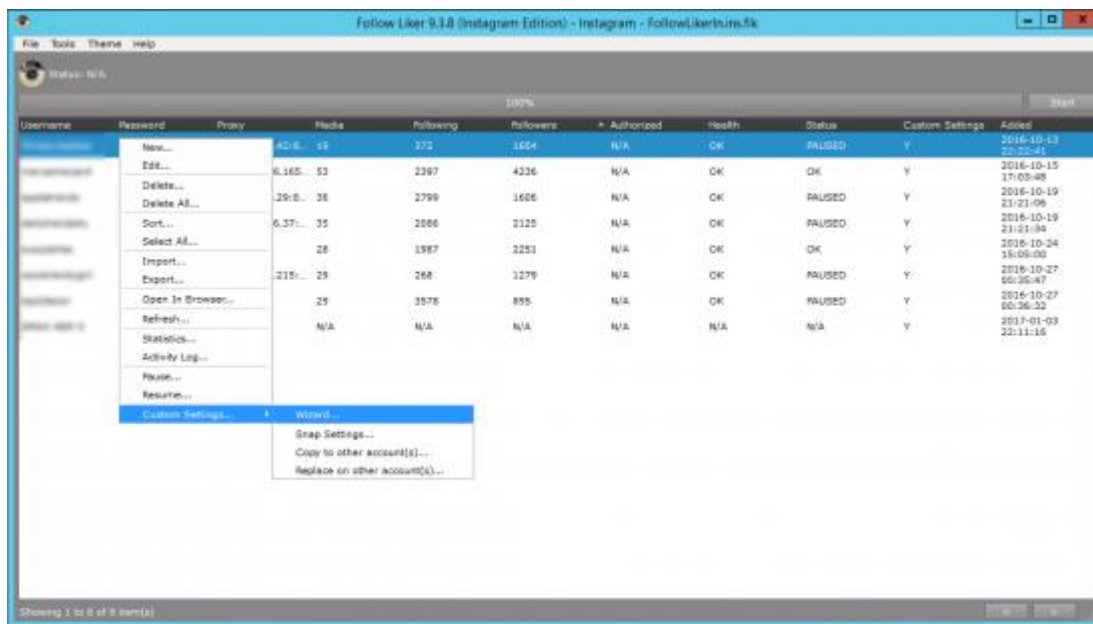
At this point we strongly recommend to study the Followliker User Guide. You can find a link to it in the email you received from Followliker and you can also find it directly on the “*Help*” menu located at the top menu bar. It is a complete guide that explains everything and you’ll surely find it very useful to understand the meaning of unfamiliar terms and functions.

Now you are ready to add your first account and customize the automated tasks to start growing it.

1. Right Click on the white area and select “*New*”.
2. Type your account details:- Username: Type letters only.
– Password

– Proxy: Here is where you paste your proxy for each account. This is optional overall if you are growing one account.

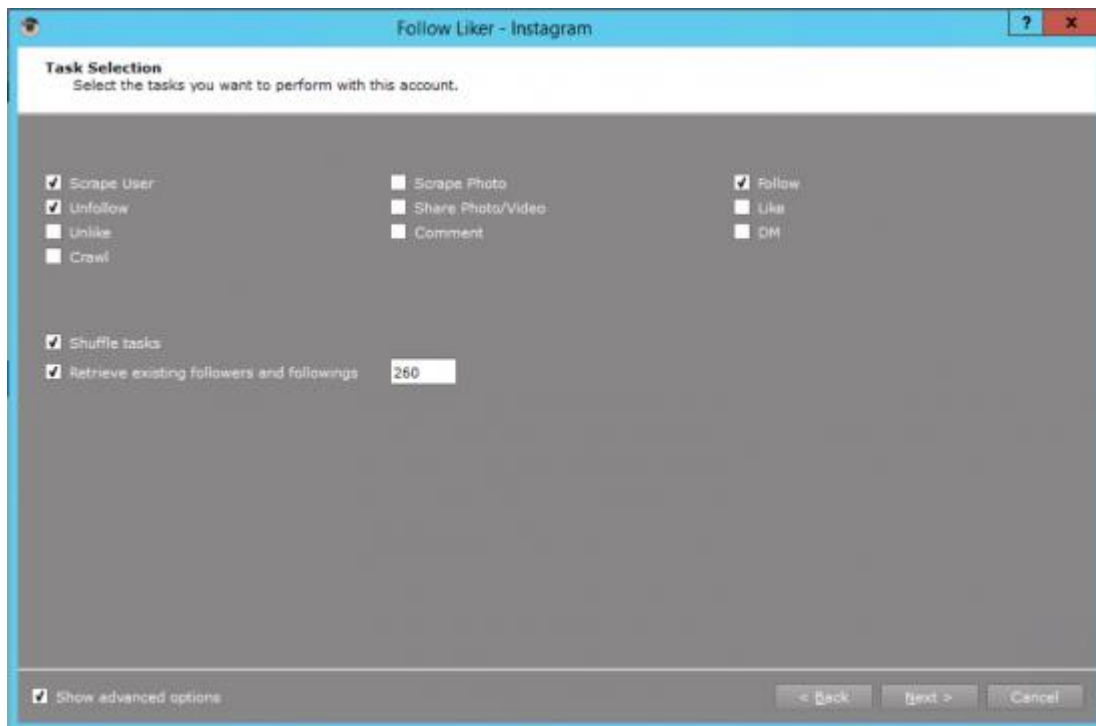
Once added and visible on the dashboard, right click directly on the account username and select “*Custom Settings*” → “*Wizard*”



One important advise is that every time you open the “*Wizard*” to make changes you must stop all Followliker activity first. To do this, find the “*Stop*” button at the top right. At this point there is no activity yet and the button shows “*Start*“. Keep it like this until you end the “*Wizard*” customization. When finish, click on “*Start*” to begin with the automation. By the way, there’s no need to stop the activity only to view settings on the “*Wizard*“.

When you open the Wizard you’ll be shown the first window that allows you to customize all the automated tasks for that particular account. This is when you remember all the terms and functions mentioned on the Followliker User Guide, which helps you to understand each social media task.

Depending on the social network it shows different tasks. We are featuring the Instagram Edition as you can notice on the pictures. The Instagram tasks you can select to automate are:



There are some tasks that work together:

- To Follow People: If you check the “*Follow*” box it automatically checks the “*Scrape User*” box.
- To Like or Comment a Photo: If you check the “*Like*” or “*Comment*” box it automatically checks the “*Scrape Photo*” box.

Follow People to encourage them to follow you back. You can set the amount of people followed per day. A healthy number of follows per day is 500. It is recommended to post everyday when you automate followings, otherwise you can experience temporal blocks.

Temporal blocks depend on several factors and it happen mostly on new accounts, accounts created days or months before. With accounts created years before you won't experience temporary blocks often. The key is to always keep posting daily content and to follow a reasonable amount of people per day to make it look natural.

You can check if you account is blocked by trying to follow people manually, if it unfollows people right after you followed them it means your account is temporary blocked. To unblock it you just need to pause the followings and wait until it lets you follow people again. It is matter of one or two days, sometimes less and sometimes more, it is different in each account. But it is important to keep posting

while you wait. If your account is blocked often even if you post, you need to follow less people per day.

If you Follow people you'll eventually need to "*Unfollow*" them because there is a limit of 7,500 people you can follow on Instagram. If you reach this limit, you won't be able to follow more people.

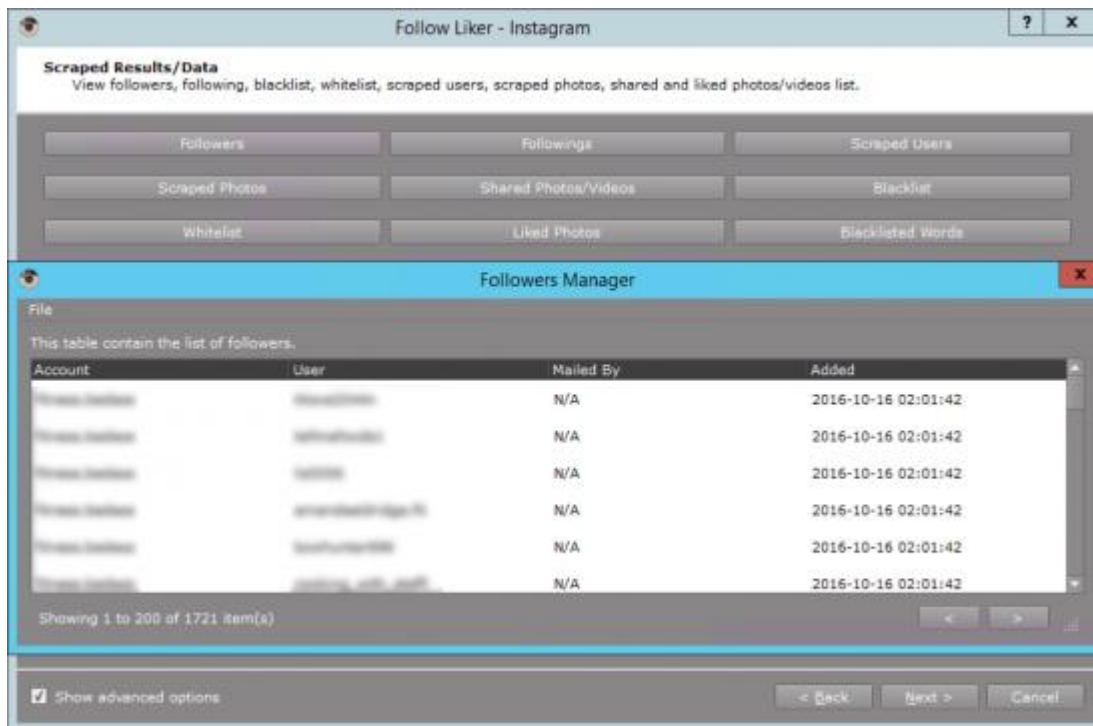
Check the "*Shuffle tasks*" box if you want the automated tasks to be randomized, this way your account activity is more natural.

The "*Retrieve existing followers and followings*" option comes with a default number. Followliker recommends to leave it like this in the User Guide.

Remember to always check the "*Show advanced options*" box at the bottom left. It will show all the settings you need to customize. Depending on which tasks you choose at this point are the windows shown next.

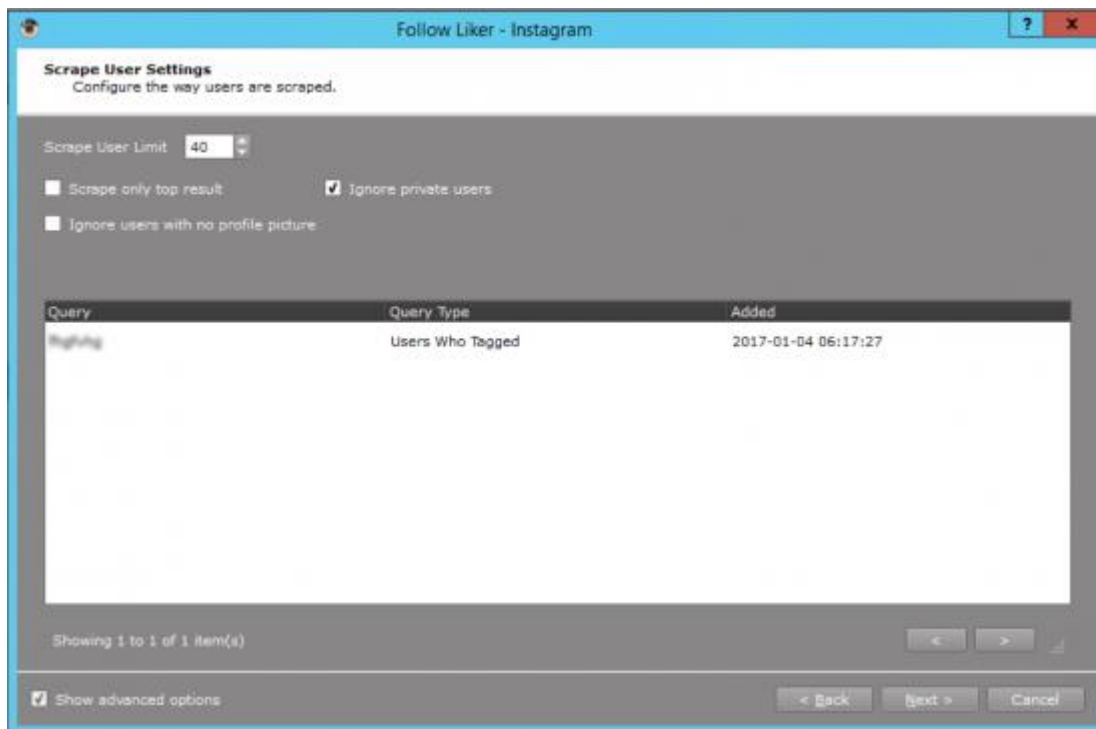
We recommend to start with a pair of tasks at the beginning. e.g. Follow/Unfollow. If you're ready, click on "*Next*".

The following window shows you a menu of results. If you click on each one, it will show you a list of the recent result of each task. You can see the list of your followers by clicking on the "*Followers*" button.



The following window shows you the “*Scrape User Settings*“. Once again, it is useful to study the Followliker User Guide to find this section more familiar. Depending on your goals or preferences, here you choose how Followliker follows people:

- Follow users by keywords, by location
- Follow a user’s followers
- Follow a user’s following
- Follow users who posted photos with a specific tag (users who tagged their photos with a hashtag or keyword)

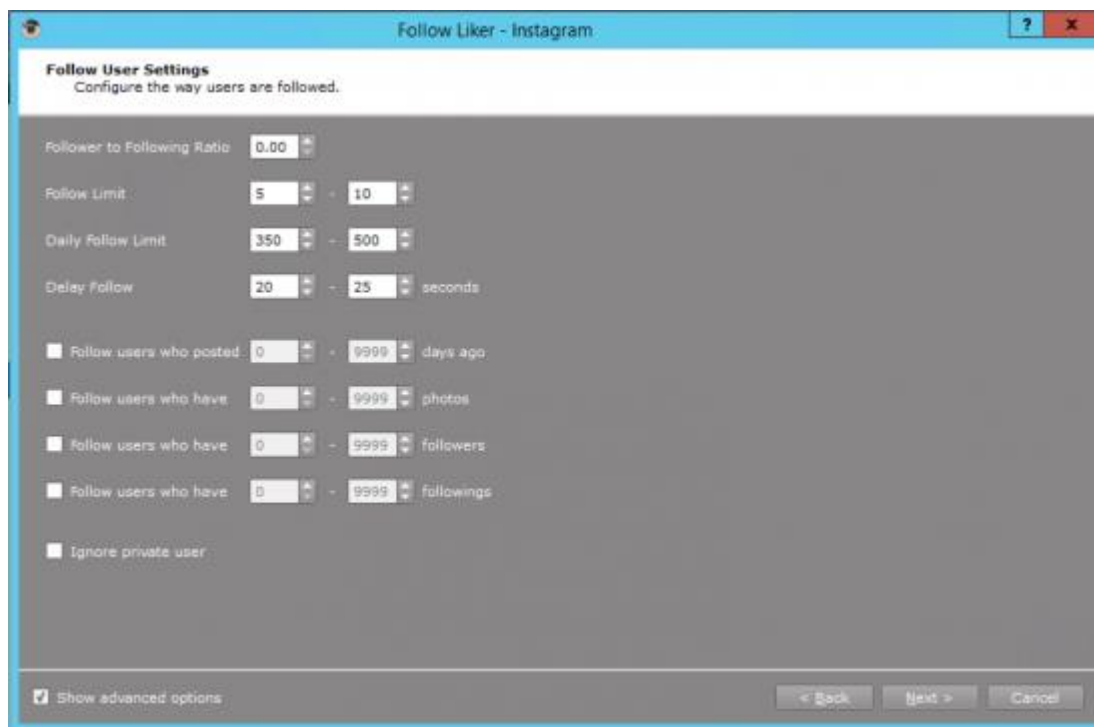


Right click on the white area to add, edit or delete a query. When you add or edit a query, you'll be asked to select the query type(the way follow liker finds and follows users) and type the query(type the username of the user account). The queries are:

- Users Who Tagged
- User's Follower
- Normal Search
- Location
- User's Following
- Users Who Liked
- Users Who Commented
- Suggested Users

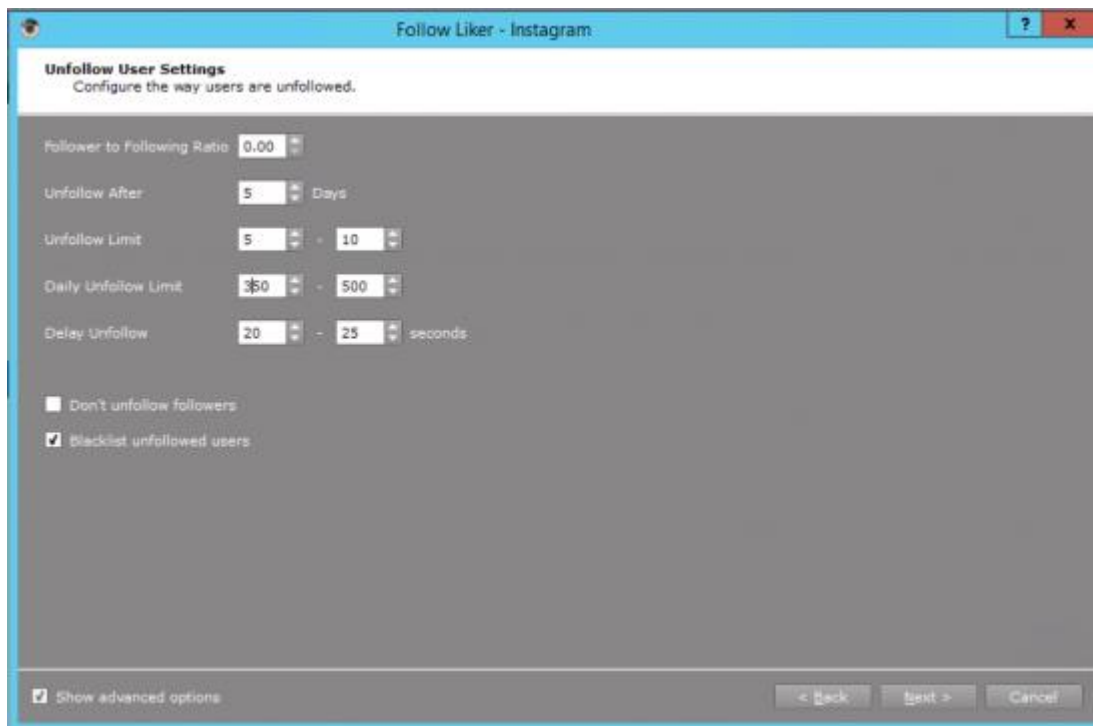
As you can see, you can follow targeted people depending on your preferences. It is up to you to decide which is the best way to find the followers you want to follow, and then a percentage of this followers will follow you back. The amount of followers you get depends on different aspects: niche, location, content quality, etc. This software is about to test a lot, so don't blame it if you don't get the desired results at first. You can always improve the way you manage your account and if you take smart decisions your account will grow more.

When you are done, click “Next“. You’ll be shown the “*Follow User Settings*” window.



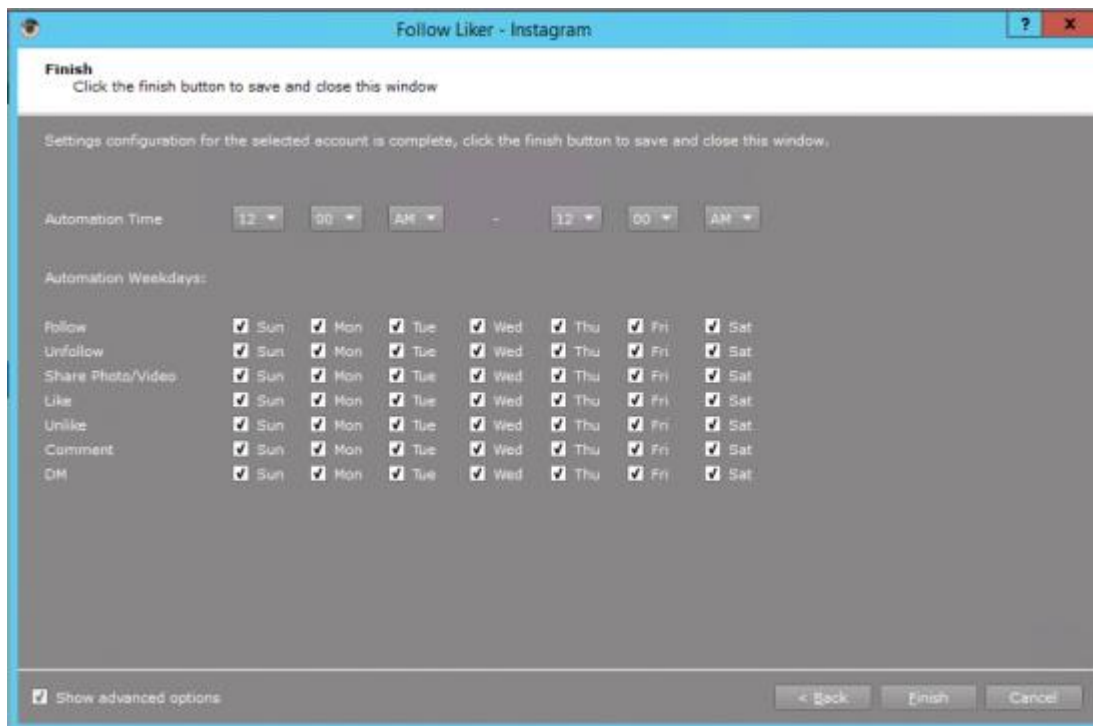
Here you manage the limit of follows that your account does per day and other very specific settings. We recommend to test with low numbers at first, this way you account starts little by little. The default numbers are fine to start.

Remember that you must unfollow those users eventually. The next window will show you the “*Unfollow User Settings*“.

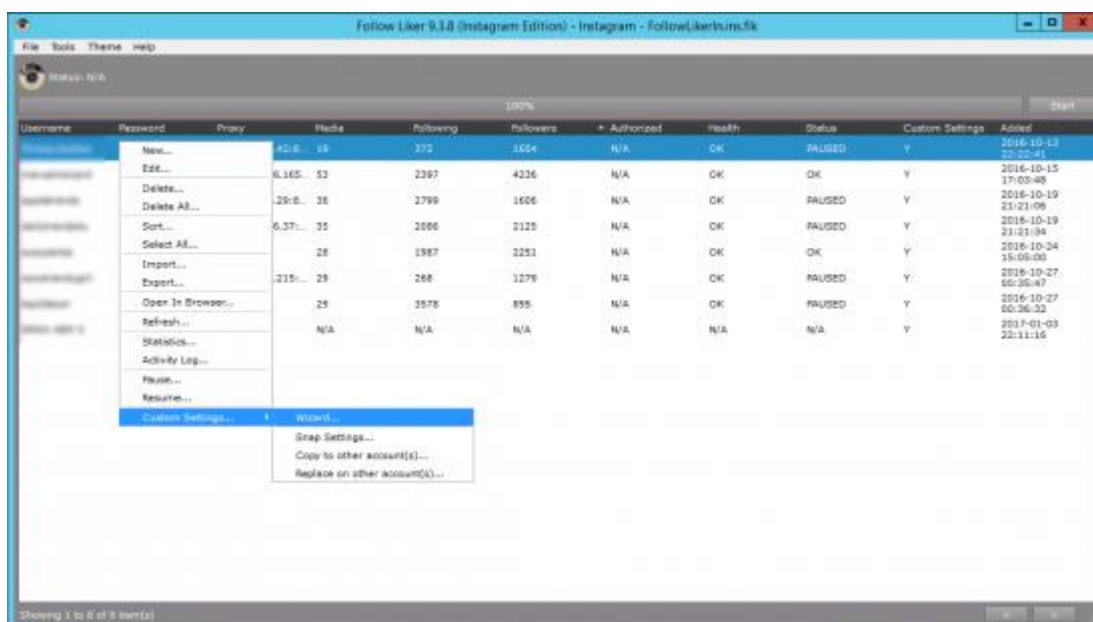


Here you manage the days the program waits until it unfollows those users. You also manage the amount of users to unfollow, which is recommended to be a similar number of the users followed. It is also better to check the “*Blacklist unfollowed users*”, this way the program always follow new users.

When you are done, click “*Next*”. You’ll be shown the last window that allows to schedule the automation activity by day and time. If you want to make it look more natural you can uncheck the weekend days and set an hour range.



When you're done, click on "Finish". You'll be shown again the dashboard and here is when you "Start" the activity with the button at the top right.



When you click start the software will initially attempt to log in your account with the username and password you provided when you added your account. At the top you'll find the "Status" bar, which will show you the activity done once you start the automation.

